

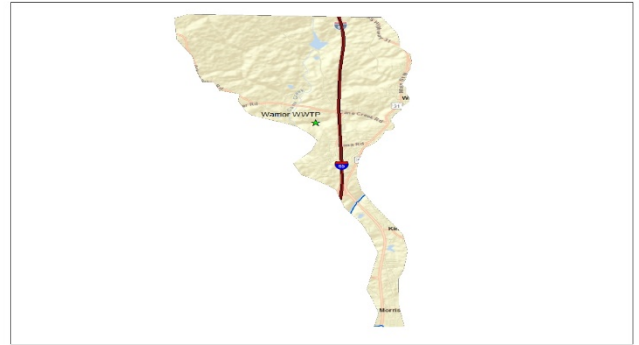


# JEFFERSON COUNTY ENVIRONMENTAL SERVICES

## WARRIOR

### WATER RECLAMATION FACILITY

CONSTRUCTED: 2006 | PERMITTED AVERAGE CAPACITY: .1 MGD | PEAK FLOW CAPACITY: .2 MGD



700 Blackburn Lane, Warrior, Alabama 35180

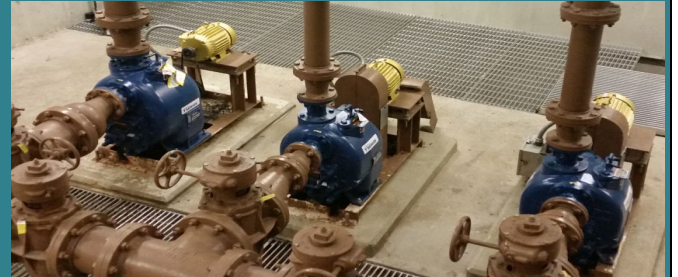
JWC rag removal system installed in 2016.

- **Warrior Water Reclamation Plant was newly constructed in 2006**
- **Plant has a 12" main feed line**
- **Large debris are chopped up using JWC grinder**
- **Rags are removed with JWC rag removal system and taken to landfill**
- **Three Pioneer influent pumps transfer water from the wet well to the aeration basins**
- **Facility has two aeration basins each having a mixer and two brush aerators that are dissolved oxygen controlled with Insite do meters**
- **Clarifiers allow solids to settle to the bottom and a skimmer arm takes care of the floating debris on the top the flow over the weir makes up the plants effluent**
- **Sand filters are used to polish up the effluent and remove smaller particles before reaching the receiving waters**
- **Disinfection is carried out through a Wedeco ultra violet system that consist of a total of two modules with six bulbs each twelve bulbs total**
- **Cascade aerator adds extra oxygen to the water before it goes into the receiving stream of Cane Creek**



Budget: 75000.00

New Gorman Rupp return pumps installed in 2017.

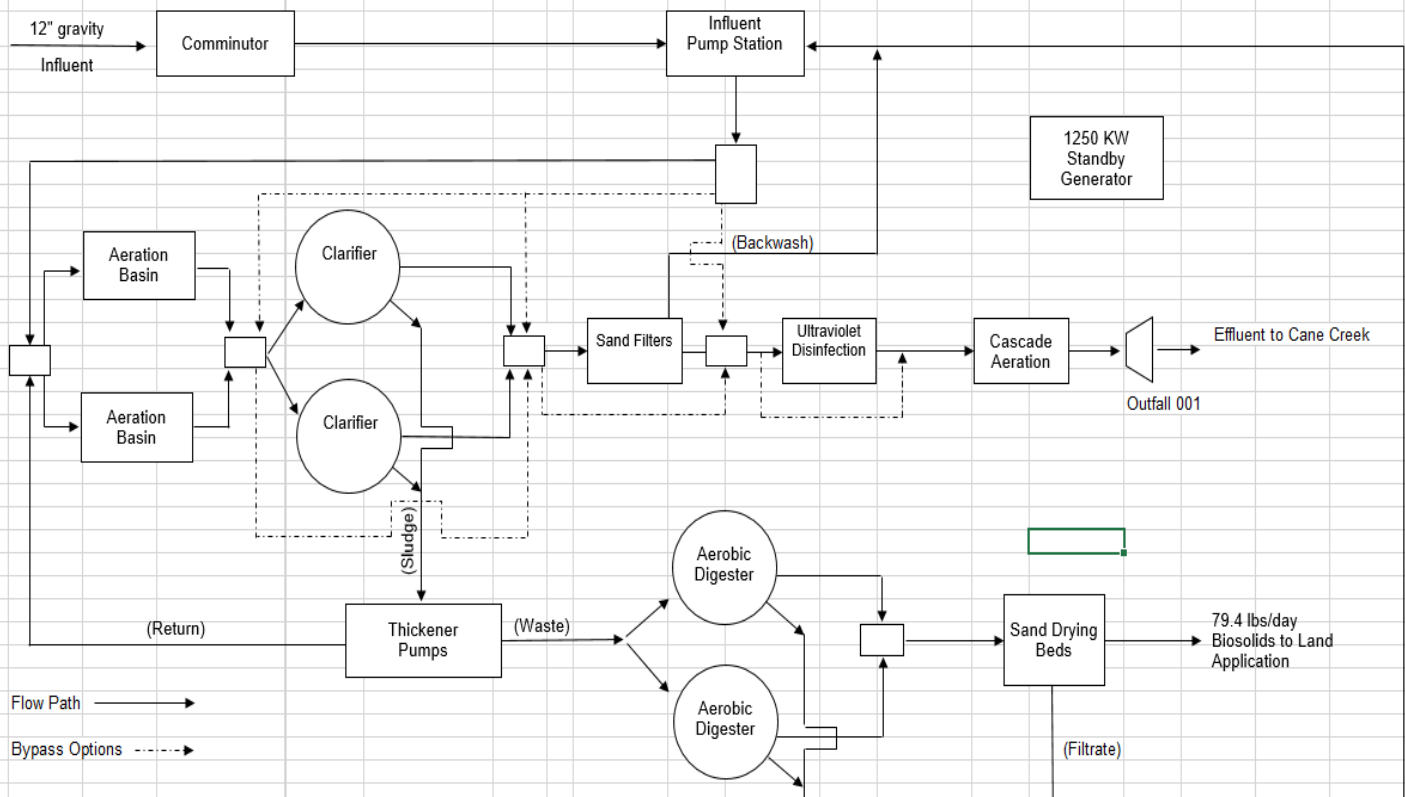



Budget: 27000.00



WARRIOR WASTEWATER TREATMENT PLANT AL0050881

FLOW SCHEMATIC - FIGURE B.3.a



- 
- **Warrior is managed on a daily basis with the five employees at Turkey Creek**
  - **No permit violations in the past 9 years**
  - **Permit monthly limits: CBOD limit 18 actual 3.5, TSS limit 30 actual 4.5, NH3 limit 1.2 actual .10, E-coli limit 126 actual 10.**
  - **Plant has consistently won multiple awards for the cleanliness and effective treatment process**
  - **Facility serves the main part of Warrior and is mostly residential**